

The Wonderful World of BEPS

Chris Lorraine

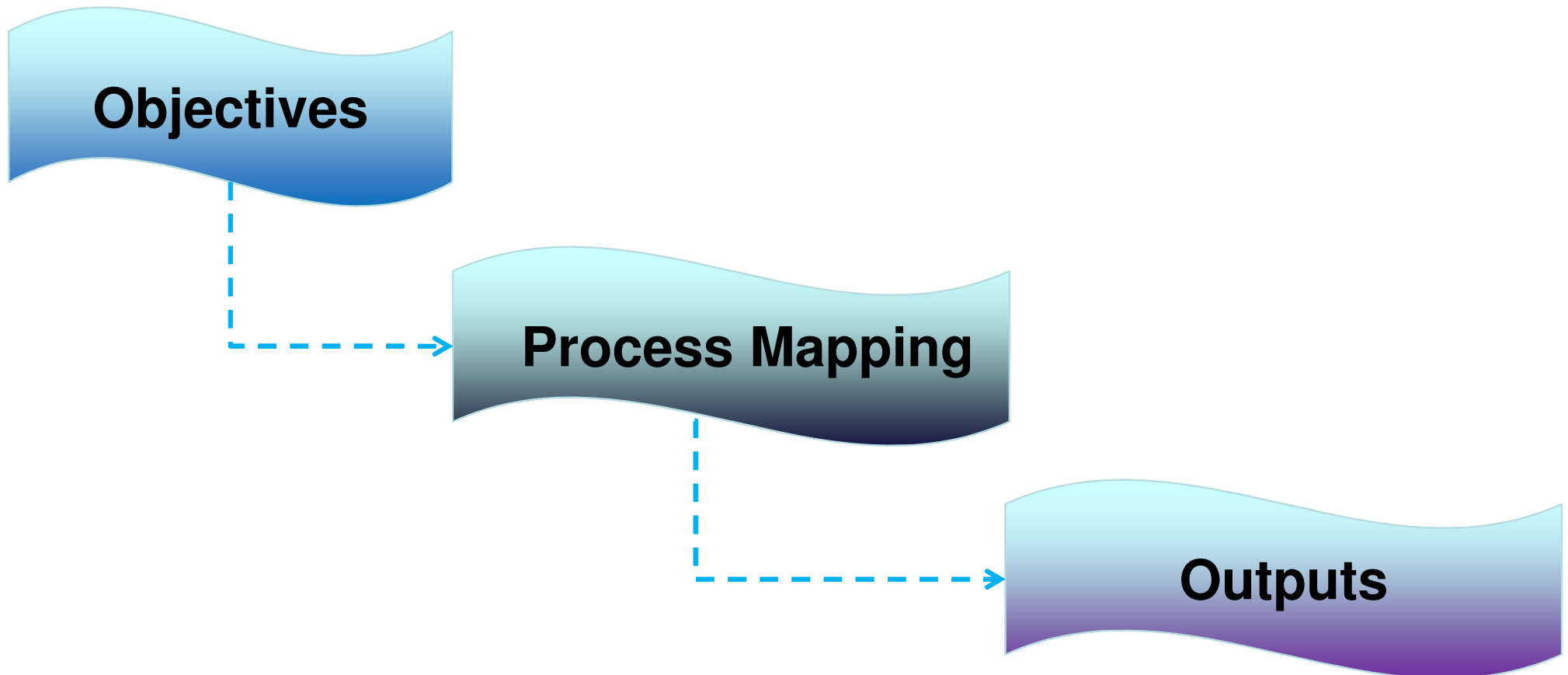
Design Director



What is a BEP

- BEP stands for Building Information Modelling Execution Plan
- Put simply the BEP is a set of defined outputs and objectives and acts to instruct how the BIM process is to be carried out on a specific project

What is a BEP



What is a BEP

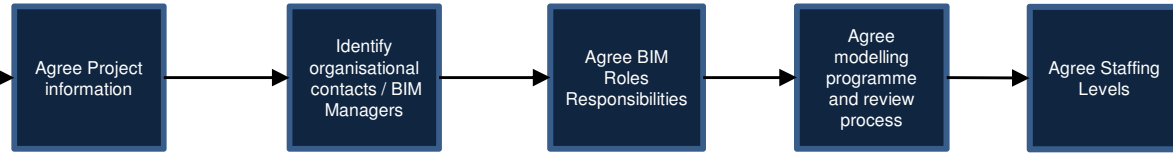
- It is a response to the Employers Information Requirement (or should be)
- It is not a document control manual

What is a BEP

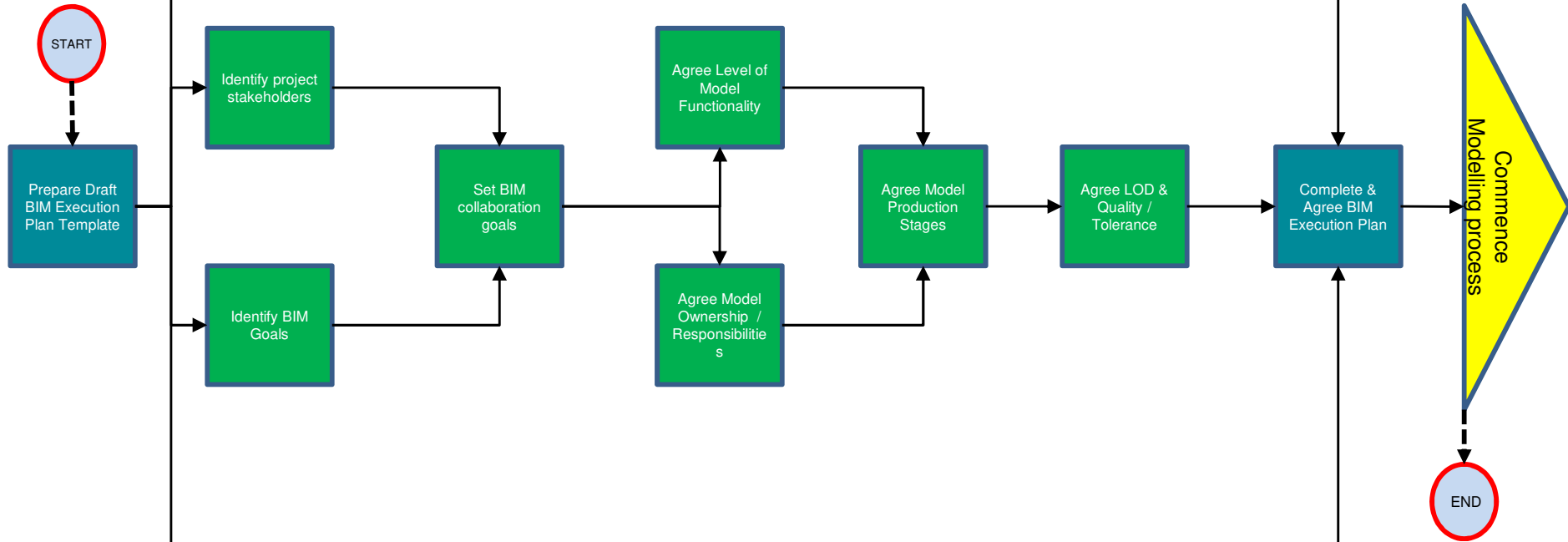
- It is a single live document that develops over time.
- It has two fundamental set ups
 - pre contract (by client)
 - post contract (by contractor/ design team)

BIM PXP Delivery Road Map

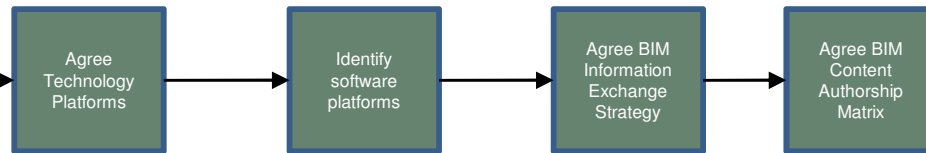
REFERENCE INFO.



PROCESS

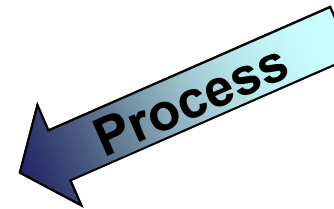
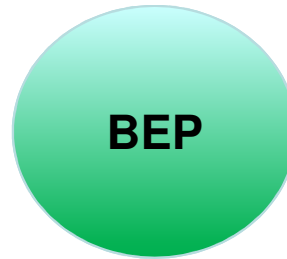
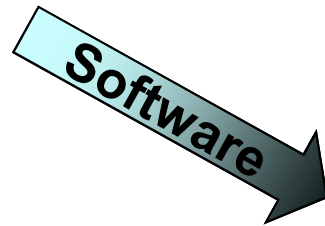


INFO. EXCHANGE



What is contained in the BEP

- INFRASTRUCTURE NEEDS
- SOFTWARE PLATFORM FREEZES
- INTERFACES TO OTHER SOFTWARE SYSTEMS



- KEY OBJECTIVES
- KEY CONTACTS
- ROLES & RESPONSIBILITIES
- MODEL STRUCTURE
- INFORMATION EXCHANGES
- COLLABORATION PROCESS
- QUALITY CONTROL

- PROJECT DELIVERABLES
- LEVEL OF DEVELOPMENT
- MODEL OUTPUTS (3D)
- LOGISTICS & PROGRAMME (4D)
- COST MODEL (5D)
- FM OUTPUTS (6D)

Our Experiences

- 1) You do not get one – “Just Price Level 2 BIM”

- 1) When you do have one
 - a) Not defined enough
 - b) Has not been coordinated with the consultant duties
 - c) Has items which should not be in the BEP –
e.g. “aspirational” e.g. not defined
 - d) It is not aligned to PAS 1192-2 or other industry standards

Our Experiences

- It not an “off the shelf item”
- It takes time to prepare
- Needs to be project specific
- At Mace we have had to develop our own template

We used the following key standards in setting our template

- Pen State Project execution planning guide 2010
- PAS 1192-2-2013.
- AEC (UK) BIM Standard for Autodesk Revit 2013
- BIM FORUM Level of Development Specification August 2013.
- BS 1192:2007
- BS 7000-4:1996

The Wonderful World of BEPS

